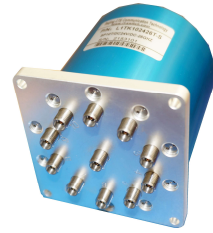


RF SPEC.

Frequency Range	Insertion Loss	VSWR	Isolation	Power Handling
DC-6GHZ	<0.30dB	<1.30	>70dB	30W
6-12.4GHZ	<0.40dB	<1.40	>65dB	20W
12.4-18GHZ	<0.50dB	<1.50	>60dB	15W
18-26.5GHZ	<0.60dB	<1.60	>55dB	10W



Characteristics	Outline Drawing (mm)
RF Impedance 50 ohm Control Voltage/Current: DC12V/200mA, RESET=N*200mA DC24V/100mA, RESET=N*100mA Switching Time <20ms Operating Life >100,0000 Operating Temperature -25 ~ +65°C RF Interface K (2.92mm)female	

Schematics

Voltage Control

With TTL Logic Control

Part Number Selector

Series: P/N:L1K10

RF Channel: 9 10

Voltage: 1 2 DC12V 2 4 DC24V

Frequency Range: 2 6

Option: Voltage Control / COM Port is Negative
 R Voltage Control / COM Port is Positive
 T-S With TTL Control & Self cut-off Circuits

* NO COM Port Polar SPEC. For With TTL Control

L1K101226 (SP10T Latching Type/DC12V(COM Port is Negative, RESET is Positive)/DC-26.5GHZ/K female/DB15 male)

L1K92426R (SP9T Latching Type/DC24V(COM Port is Positive, RESET is Negative)/DC-26.5GHZ/K female/DB15 male)

L1K102426T-S (SP10T Latching Type/DC24V/DC-26.5GHZ/With TTL Logic Control & self cut-off circuits/K female/DB15 male)



Tel :10-82087227
 Fax:10-82087380

E-mail: sales@rf-switch.com
 Web site: www.rf-switch.com